



Twisted Cabinet Knob



loidolt

[VIEW IN BROWSER](#)

updated 12. 4. 2022 | published 30. 3. 2022

Summary

Simple twisted cabinet knob. Intended to be printed in stainless steel filament from Proto-Pasta: ([http://www.proto-...](http://www.proto-pasta.com/collections/retail/products/stainless-steel-pla)

[Household](#) > [Kitchen](#)

Tags: [knob](#) [handle](#) [hardware](#) [modern](#) [twisted](#) [cabinet](#)
[simple](#)

Simple twisted cabinet knob. Intended to be printed in stainless steel filament from Proto-Pasta:

(<http://www.proto-pasta.com/collections/retail/products/stainless-steel-pla>)

These knobs along with my modern drawer handle model:

<https://www.printables.com/model/157165-modern-cabinet-handle>

will be used for all the hardware in my brother's new house.

Print Settings

Rafts:

Doesn't Matter

Supports:

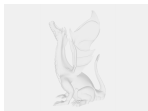
Doesn't Matter

Category: Kitchen & Dining

Model files



twistedknob.stl



twistedknob.skp



twistedknobupside down.stl

[Find source .stl files on Thingiverse.com](#)

License ©

This work is licensed under a
Creative Commons (4.0 International License)



Attribution-ShareAlike

- ✗ | Sharing without ATTRIBUTION
- ✓ | Remix Culture allowed
- ✓ | Commercial Use
- ✓ | Free Cultural Works
- ✓ | Meets Open Definition